

LAKE of THE OZARKS

SECOND HOME LIVING

A SHOWCASE PUBLISHING, INC. LUXURY PERIODICAL ■ www.lakeoftheozarkssecondhome.com ■ SPRING 2010 ■ \$4.95

SPRING
ETERNAL!

Your Lake Calendar

Your Spring Guide to Getting Out at the Lake of the Ozarks

A Dream Home that Was

One Family's Dream Home Meets Tragedy & Triumph

Greener Pastures

A Trend in Second-Tier Golf Lake Living Heats Up

Signs of the Season

Loving Life

AT THE

LAKE of THE OZARKS

0 1 2

CONTENTS

LAKE of THE OZARKS
SECOND HOME LIVING



27 | Message from the Publisher **by Dave Leathers**
Just an easy, scenic drive from the Lake, Hermann, Missouri is a must-visit to cure the cabin fever blues.

36 | Lake Calendar of Events **by Alisha Beffa**
Exciting happenings at the Lake of the Ozarks and Mid-Missouri for this Spring and Summer!

42 | A Dream Home that Was **by Joanna Schneider**
One family's home meets tragedy and triumph.

58 | Greener Pastures **by Joanna Schneider**
A trend in second-tier golf living heats up.

74 | On Course With Style **by Joanna Schneider**
After a lifetime of big-city living, Kathy & Jim Murphy opted for peaceful fairways.

80 | It's all in the Details **by Joanna Schneider**
For Mike Mistler, life in the steel yard has become an artistic inspiration.

86 | Palatial Elegance **by Joanna Schneider**
This Lake retreat offers supreme style and sophistication for a discerning Kansas City couple.

93 | Destination Columbia! **Stories by Alisha Beffa and Joanna Schneider**
A Special Section: Excitement-filled Columbia, just an hour's drive north from the Lake, offers another avenue of entertainment for the growing year-round Lake second home owner.



110 | Signs of the Season **A Photo Essay by Donny Larsen**
The dogwood blossoms mark the return of Spring.

122 | Focus on Foliage **by Anna Earnshaw**
The Lake of the Ozarks is alive and well with an abundance of plant life. With careful planning, you can create your very own second home Garden of Eden.

134 | Old World Charm, World Class Wines **by Sandy Watts**
A taste of culture, history and innovation is available in the hills of Mid-Missouri.

144 | Lake Area B&Bs **by Melissa Ferry**
The Lake of the Ozarks has six great bed & breakfasts for you to enjoy year round!



F FOCUS *on* FOLIAGE

The Lake of the Ozarks is alive and well with an abundance of plant life. With careful planning, you can create your very own Second Home Garden of Eden.

by Anna Earnshaw

For many, the landscaping of your second home at the Lake of the Ozarks is simply an extension of the thoughtful and beautiful design you have created indoors. To create lush, interesting outdoor spaces, foliage adds color long after the blooms of spring have vanished.

A wonderful compliment to any landscape, foliage allows gardeners to create one-of-a-kind looks from traditional to exotic, says Landscape Designer Daniel Hanson of **Lightning Landscape and Irrigation**.

"Using foliage in your landscape design is like painting a picture," he says. "Foliage provides contrast and texture, while adding year-round interest so even in winter you look out and see something beautiful."

Foliage allows homeowners to choose plants that provide not only year-round beauty, but selections that create gorgeous focal points and added outdoor appeal. In Missouri's temperate weather, with humidity in summer months and some chill

"Large foliage plants provide breathtaking foundations in beds and borders, creating attention-grabbing backdrops for other types of plants used in lower or frontage tiers. The options are endless, and the design appeal offered by foliage is as limitless as the plant palette and imagination."

One of the biggest reasons that foliage focused landscaping is so prevalent at the Lake is because the natural "Ozark" is so perfect for their growth, explains Ben Evers, landscape designer with **Heartland Landscaping**.

"Many homeowners, including myself, find that growing annuals, perennials and blooming shrubs under a canopy of deciduous hardwoods is rather difficult," he says. "Most commonly-used flowering plants are simply not adapted to shady conditions. At my own home in the 'woods' and at many of my clients' Lake residences, we have to be creative with the color and texture of plants that are primarily grown for their foliage."

Perhaps most important to consider when incorporating foliage to your landscape design is to break away from the expected, says **Terra Nova Nurseries** President and Co-Founder Dan Heims.

► please turn the page ►



PHOTO COURTESY OF DOCTORS LAWN & LANDSCAPE



Green Horizons
GARDEN CENTER
Complete Landscaping Service

"Gardening Is Our Life"
29 YEARS SERVICE

Sunrise Beach
573-374-2005

Jefferson City
573-636-4373

• Commercial • Residential Landscaping



- One of the Most Complete Selections of Trees, Shrubs & Perennials in the Lake Area
- Decorative Mulch & Rock
- Full Time Landscape Designers on Staff

- Natural Stone & Unit Block Retaining Walls
- New Lawns - Seeding & Sodding
- Drainage & Erosion Control
- Topsoil • Compost

SUNRISE BEACH - 4 Minutes West of Porto Cima on MM at Chimney Point Rd



GLASCOCK
CONSTRUCTION, INC.

General Contractor
Residential
Commercial
In-House Design

Tim Glascocock
Owner







Building quality homes at the Lake of the Ozarks since 1987

573/348-3229 • Fax: 573/348-4191
5727 Chapel Dr. • P.O. Box 224 • Osage Beach, MO 65065

Now In Our New Location.

Fox's

Your Levi's Store at the Lake

Down from Target, next to Maurices

**Prewitt's Point
Shopping Center
OSAGE BEACH
348-9559**

Levi's

"So often we see landscapes that are the picture of boredom; similar textures, similar color values and green, green, green on green. What foliage plants add is interest," Dan explains.

The combination of specific foliage can truly create the extraordinary, adds Head Landscape Designer, Jan Mitchell, of **Doctor's Lawn and Landscape**. The burgundy and brilliant orange and coral bark of Japanese Maple paired with the yellow-peach hue of Coral Bells and the neon-fuchsia of Japanese Pieris have a magical effect, she says.

"The range in leaf colors is really unlimited from maroon and red to yellow and violet," Jan explains. "Many of these maintain their leaves even in winter and add an unbelievable beauty and interest."

It's also key to recognize the importance of contrast. And more importantly, that contrast can be

SERVICES

LANDSCAPE
ARCHITECTURE
& URBAN PLANNING

LAND DEVELOPMENT

MECHANICAL

ELECTRICAL

PLUMBING

SURVEY & FIELD SERVICES

ENVIRONMENTAL
RESOURCES &
COMPLIANCE

WATER RESOURCES

TRANSPORTATION

TRAFFIC

OLSSON
ASSOCIATES

WWW.OACONSULTING.COM

DESIGNING YOUR
DREAM

OVERLAND PARK

7301 West 133rd Street,
Suite 200
Overland Park, KS 66213
Phone: 913.381.1170

SPRINGFIELD

1525 E. Republic Road
Building B, Suite 100
Springfield, MO 65804
Phone: 417.890.8802

found not just in color use but also in the use of varying textures. For those who already have significant planting outdoors, foliage can be "overlain" within an existing landscape to add design interest.

For a complete look from border to back, Dan suggests the trailing flowers of Tiarella 'Happy Trails' and 'Cascade Creeper,' the luscious metallic purple-rose leaf of Heuchera 'Berry Smoothie,' the bold blue color of Yucca 'Sapphire Skies' and last, the tall, vanilla-grape scented Actaea 'Black Negligee.'

Also important to consider is the design consistency of your landscaping in relation to you and your home, says Dan. From colonial and formal to ultra modern, your design selections should blend seamlessly with the general feel you have created elsewhere on your property.

Additionally, consider the type of soil you are working with = please turn page =

escape the ordinary... with "greener" landscape solutions



Established 1996

573.302.8866

6386 Highway 54
Osage Beach, MO 65065

www.heartlandlandscape.com



Paul's Supermarkets, Serving the Lake since 1968!

Certified Angus Beef

Great Selection of Wines and Spirits

Party Trays for your *Home or Boat*

Boar's Head Deli Meats and Cheeses

Fresh Baked Breads

Locally Owned and Operated

Conveniently located with the *Right-Sized Stores* so you can spend Less time shopping and More time Boating! Check us out on the web at www.paulssupermarket.com

Focus on Foliage Resource Book

Green Horizons Garden Center

- (573) 374-2005
166 Chimney Point
Sunrise Beach, Missouri 65079
- (573) 636-4373
2607 Route CC
Jefferson City, Missouri 65109

Doctor's Lawn and Landscape

- www.doctorslawn.com
(573) 374-1312
606 State Road TT
Sunrise Beach, Missouri 65079
- (913) 681-8041
7425 West 161st Street
Overland Park, Kansas 66085

Heartland Landscape Group, Inc.

- (573) 302-8866 • 6386 Highway 54
Osage Beach, Missouri 65065
www.heartlandlandscape.com

Terra Nova Nurseries

- www.terravanurseries.com

Keller's Flowerhaus & Landscaping

- (573) 365-6224 • (816) 373-6223
www.kellersflowers.com
15640 East 40 Highway
Kansas City, Missouri 64136

Lake Home Nursery & Landscaping

- (573) 348-4104
www.lakehomenursery.com
628 Highway D
Osage Beach, Missouri 65065

Lightning Landscape & Irrigation

- (573) 372-3400
www.lightning-landscape.com
29580 Camp Sharon Road
Gravois Mills, Missouri 65037

Novalis Plants That Work & Plants That Work by Color

- www.plantsthatwork.com

- Don't buy everything at once! Go to the garden center in the spring, summer and fall. You will find that by selecting what looks great at each visit, your garden will not peak, but will instead provide year-round interest.
- Be adventurous! At the garden center, pull together different plants to see how they will go with one another. And, consider using warmer-climate perennial varieties as seasonal additions to gardens for unusual landscape design.
- Leave holes in your landscape to allow room for new material that may extend your flowering and foliage seasons.
- Rely on known and trustworthy lines or collections of plants that have been tested and tried for the region in which you live. ■



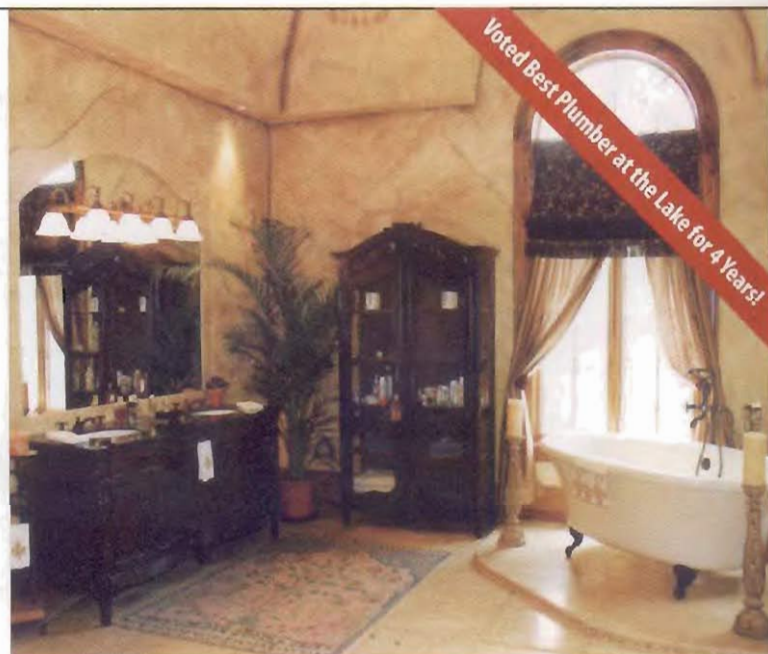
1125 Industrial Drive, Osage Beach, MO

From service to design and installation, we'll meet the needs of your home or commercial building.

Voted Best Plumbing Company at the Lake for four consecutive years.

- Custom Homes
- New Construction
- Remodeling
- Repair Service
- Master Plumbers
- Water and Sewer Lines

www.fourseasonsplumbing.com



When only the best will do...

We work with the Lake's premiere builders to bring quality, safety, comfort and distinction to your home or project.