

**Sizzling Summer Issue!**

**OUR BEST TIPS**  
for Beautiful Gardens



# Garden Gate

www.GardenGateMagazine.com  
August 2013 • Issue 112

## Secrets Behind a Beautiful **SUMMER GARDEN**

page 34

**MAKEOVER:  
EASY-CARE  
NATIVE PLANTS**  
Star in This **COLORFUL  
FRONT YARD SHOW** page 8

**TIPS THE PROS KNOW**  
About Getting the Most  
Impact From Your Annuals page 6

**MEET OUR FAVORITE**  
No-Fail Annuals  
for Sun and Shade page 16

**4 NASTY SUMMER INSECTS**  
(and How to Get Rid of Them) page 28

**6 FLOWERS THAT  
SHINE in the Evening** page 20

**6 EASY-GOING  
PLANTS  
+  
3 SMART DESIGNS  
=  
GORGEOUS  
GARDEN**  
page 24

# contents

august 2013

issue no. 112



We love coleus! Meet some of our favorite new varieties and learn handy tips for designing with them on page 16.

## in every issue

## features

**AT HOME GARDENER**  
grow a garden like a pro..... **6**

**BEFORE & AFTER**  
native plants star in this  
color-filled front yard show.....**8**

**GARDEN GATE'S  
TOP PICKS**  
6 evening bloomers.....**20**

**DESIGN CHALLENGE**  
create a beautiful  
side yard .....**38**

**FROM THE DRAWING BOARD**  
a charming garden  
on the side.....**40**

**CONTAINER RECIPE**  
add height  
to any container.....**42**

**NOTES FROM THE  
TEST GARDEN**  
rain barrels:  
save water & money!.....**48**

**EDITOR'S CHOICE**  
superbena royale  
peachy keen verbena .....**50**

**Coneflowers** ..... **12**  
This versatile perennial deserves  
a home in your garden — get our  
best tips for choosing and  
growing them.

**Coleus** ..... **16**  
You probably know coleus, but  
do you know these 9 surprising  
ideas and tips? Check them out.

**Choose Your Style** ..... **24**  
We mixed and matched six  
easy-care plants into three unique  
garden designs. There's something  
for everyone!

**Bugs of Summer** ..... **28**  
Don't let these 4 nasty bugs take  
over your garden. Find out what  
you can do to send them packing.

**7 Easy Ways to  
Create Shade**..... **30**  
Make your garden an inviting  
place to be every summer with  
these shade possibilities.

**ON THE COVER:**  
**Hot Color and Cool  
Relaxation**..... **34**  
Take a tour of this beautiful  
Massachusetts garden and find  
out how to have both!

**ON THE COVER:** Learn tips for  
creating a colorful summer show  
like this one on page 34.  
Photo: Jack Coyier

**ON THE BACK COVER:** Ballad dwarf  
sunflower (*Helianthus annuus*).  
Photo: Jack Coyier

## departments

reader tips ..... **4**  
pest watch..... **5**  
what's new ..... **44**  
did you know? ..... **45**  
ask *Garden Gate* ..... **46**  
weed watch..... **47**  
finishing touches..... **52**



Free tips  
every week!

## Garden Gate eNotes

Garden tips and techniques delivered  
to you by email each week!

Sign up today:

[www.GardenGateMagazine.com](http://www.GardenGateMagazine.com)

**PLUS!** Don't forget you can share eNotes  
with friends via email and on  
Facebook, Twitter and Pinterest.



## New! easy weekend Garden Solutions

This 100-page, softcover book has dozens  
of problem-solving tips and ideas for your  
best garden ever!

Find this book and others at  
[www.GardenGateStore.com](http://www.GardenGateStore.com)

# a charming garden on the side

I like to choose plants that won't monopolize my time. For example, these fragrant viburnums are nearly pest-free. Masses of perennials scattered through the area save time, too. If the coral bells need to be deadheaded, you can do them all the same day. No time to deadhead everything? Leave the large coneflower seedheads standing all winter.

Give hybrid lilies a sunny spot with good drainage and you can forget about them for years to come. Once they bloom, snip off the spent flower heads and leave the leafy stems to feed the bulb. These lilies are tucked in between other plants so the stems don't look odd poking up here and there while they ripen.

You may need to stake tall lilies to keep the large flowers standing, but that's a small price to pay for their summer impact. Once the blossoms are past, pull the stake out — without the heavy flowers the stems will stand just fine.

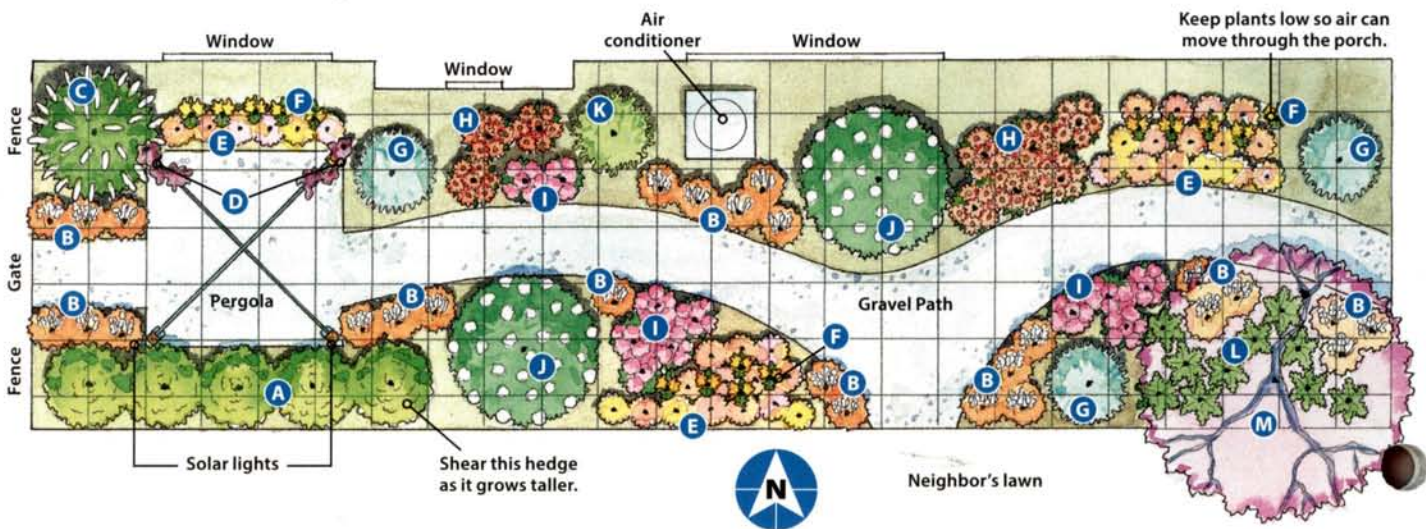
**ECONOMIZE WITH SEEDS** Bold beds of fragrant four o'clocks will pull in hungry hummingbirds and evening moths. Pick up a couple of packets of seeds and sow them directly in the garden after the last spring frost. Or start plants indoors to get an earlier bloom. Plant two or three of the large, easy-to-handle seeds in each peat pot filled with seed-starting mix. Treat these tender perennials as annuals and simply replace them next spring. In some areas, they will even reseed.



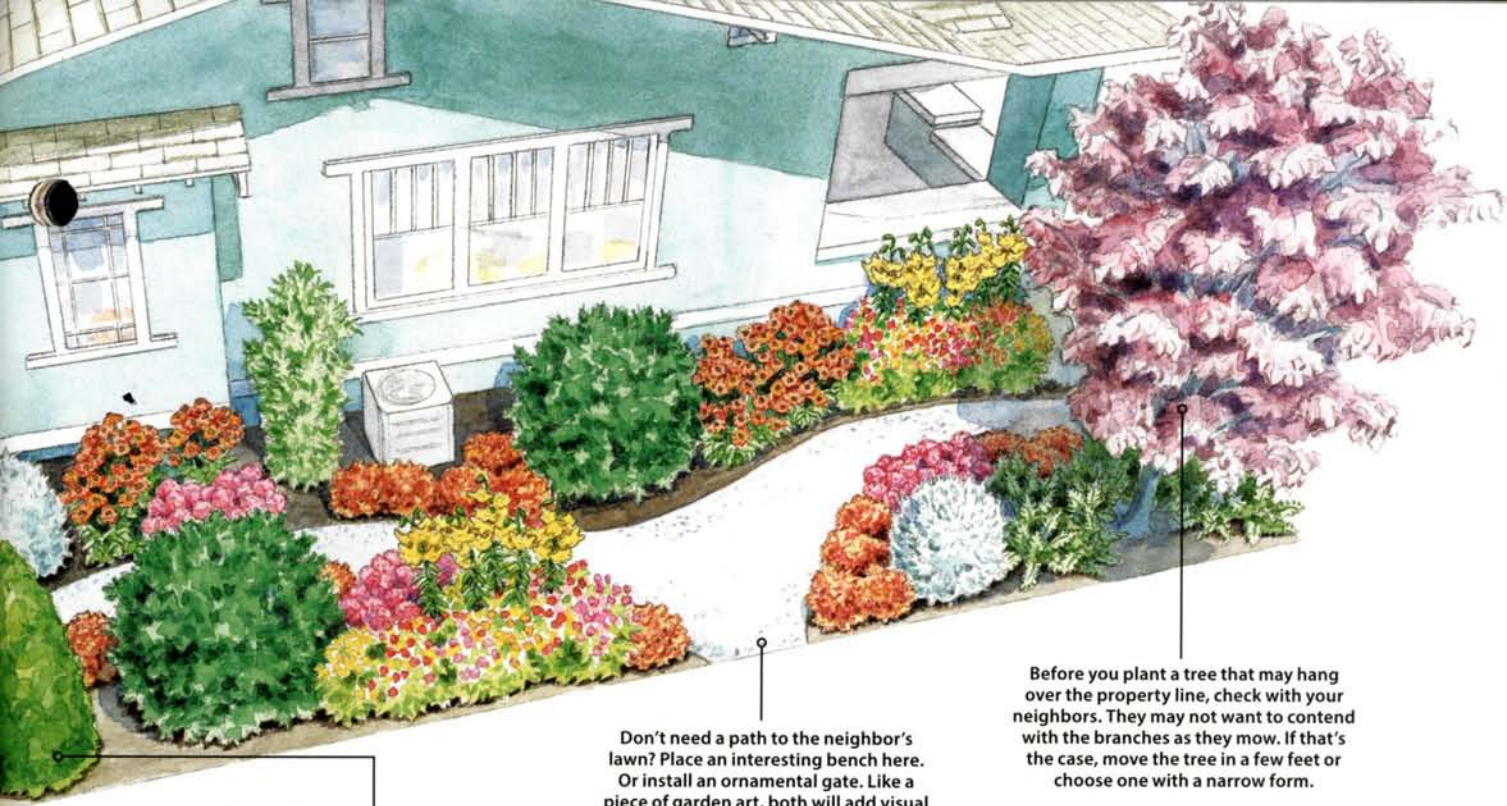
**WATCH THE SUN** At first glance you might assume the entire area under this redbud is in shade, but it's not. It's best if plants on the west and south side of the tree can tolerate some sun. Even though they're under the branches, afternoon light still angles into the area. Plants on the east and north sides only get morning light, so they need to be shade-tolerant.

You'll find much more information about each of the plants in the chart to the right. If you don't have a spot for this garden, I bet at least one of the plants on the list will pique your interest. □

— Jim Childs



Scale: 1 square = 4 square ft.



As these arborvitae grow taller, they may block too much light and reduce the air circulation. But they can easily be pruned once a year to keep them under 10 ft. tall.

Don't need a path to the neighbor's lawn? Place an interesting bench here. Or install an ornamental gate. Like a piece of garden art, both will add visual interest along this curving path.

Before you plant a tree that may hang over the property line, check with your neighbors. They may not want to contend with the branches as they mow. If that's the case, move the tree in a few feet or choose one with a narrow form.

## THE GARDEN'S PALETTE

Code	Plant Name	No. to Plant	Type	Blooms	Light	Height/ Width	Cold/Heat Zones	Comments
A	Arborvitae <i>Thuja occidentalis</i> Emerald ('Smaragd')	5	Evergreen tree	NA	Full sun to part shade	12-15 ft./ 3-4 ft.	4-8/8-1	Set plants close together for a tight hedge; prune for size; bright green all winter
B	Coral bells <i>Heuchera</i> 'Ginger Peach'	27	Perennial	White; midsummer	Full sun to part shade	10-18 in./ 18-24 in.	4-9/9-1	Mounds of ruffled amber leaves with pink undertones; vigorous grower
C	Summersweet <i>Clethra alnifolia</i> Vanilla Spice® ('Caleb')	1	Shrub	White; summer	Full sun to part shade	3-6 ft./ 3-6 ft.	4-8/8-1	Fragrant flowers; golden fall color; prefers moist soil
D	Grape <i>Vitis vinifera</i> 'Purpurea'	2	Vine	Green; spring	Full sun to part shade	18-24 ft. spreading	6-9/9-1	Leaves are gray-green aging to dark burgundy; clusters of small grapes in fall
E	Four o'clock <i>Mirabilis jalapa</i> Marbles Mix	35	Tender perennial	Mixed shades; mid- to late summer	Full sun to part shade	30-48 in./ 15-18 in.	7-11/12-1	Fragrant flowers popular with hummingbirds; sow seeds directly in the garden
F	Trumpet lily <i>Lilium</i> 'Louis XIV'	15	Perennial bulb	Golden yellow; late summer	Full sun	4-5 ft./ 1-2 ft.	5-9/9-1	Elegantly recurved flower petals; remove spent flowers but allow foliage to ripen
G	False cypress <i>Chamaecyparis</i> <i>lawsoniana</i> 'Barry's Silver'	3	Evergreen shrub	NA	Full sun to part shade	2-4 ft./ 2-4 ft.	5-9/9-1	Silver-white new foliage; older needles take on a blue tint
H	Coneflower <i>Echinacea</i> 'Tangerine Dream'	9	Perennial	Bright orange; late summer	Full sun to part shade	20-30 in./ 18-24 in.	4-9/9-1	4-in. diameter flowers hold their color better than most cultivars; honey-scented
I	Garden phlox <i>Phlox paniculata</i> 'Watermelon Punch'	11	Perennial	Bright pink; summer	Full sun	12-18 in./ 12-18 in.	4-9/9-1	Large clusters of fragrant florets; deadhead to keep flowers coming into late summer
J	Burkwood viburnum <i>Viburnum burkwoodii</i> 'Conoy'	2	Shrub	Pink to white; spring	Full sun to part shade	4-5 ft./ 7-8 ft.	5-8/8-1	Carnation-scented flowers open pink and fade to white; glossy green leaves; semi-evergreen
K	Buckthorn <i>Frangula alnus</i> Fine Line® ('Ron Williams')	1	Shrub	Insignificant	Full sun to part shade	5-7 ft./ 2-3 ft.	2-7/7-1	Feathery foliage; very narrow form; rarely requires pruning; yellow fall color
L	Autumn fern <i>Dryopteris erythrosora</i> 'Brilliance'	10	Perennial	NA	Part shade	18-30 in./ 18-30 in.	4-8/8-1	Pink fiddleheads; new foliage is coppery orange before changing to green
M	Redbud <i>Cercis canadensis</i> Burgundy Hearts® ('Gerswan')	1	Tree	Lavender-pink; spring	Full sun to part shade	15-25 ft./ 15-25 ft.	6-9/9-1	Shimmering deep burgundy foliage all season; flowers bloom before the leaves sprout